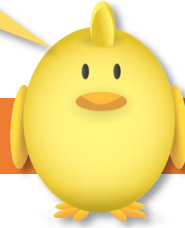




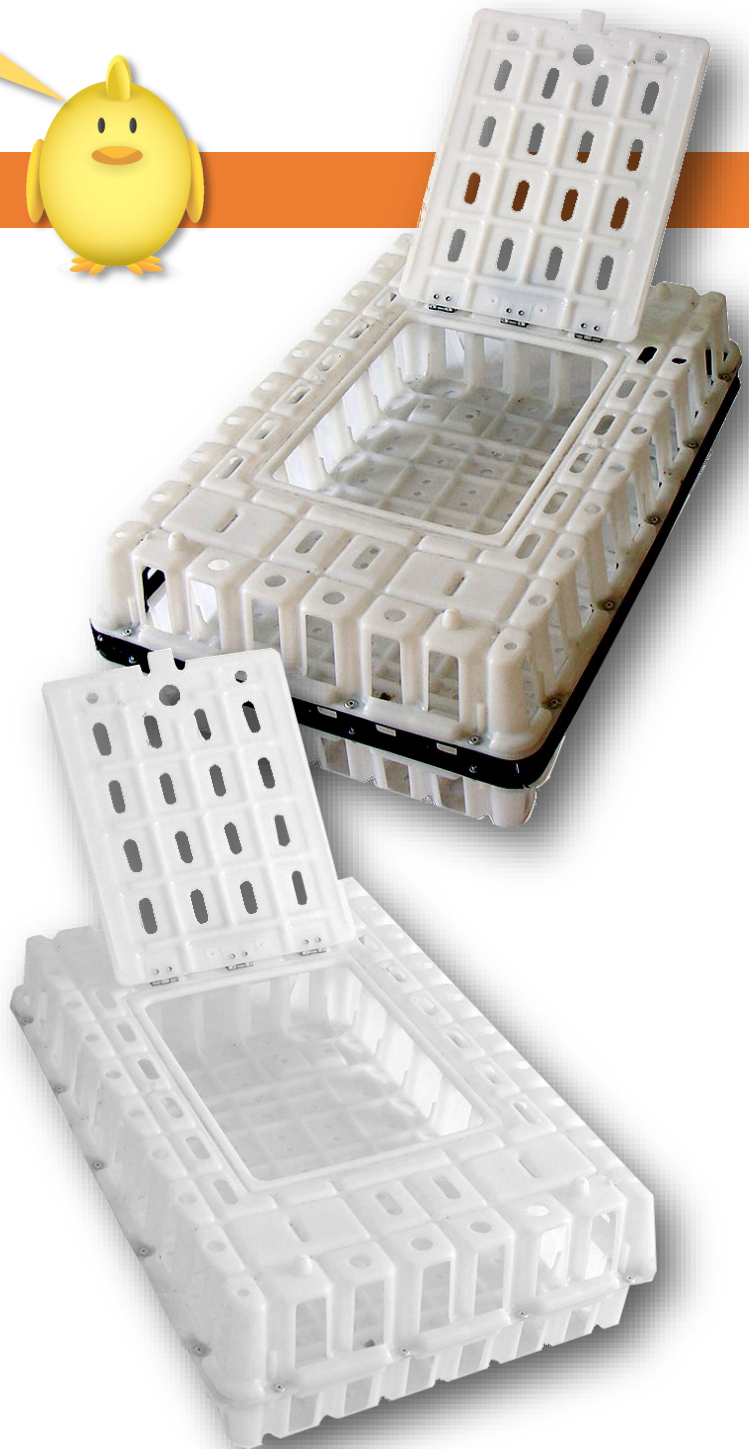
PolyKoops

These stackable coops can reduce shipping costs by up to 50%

## PolyKoop



- The special design allows for better ventilation
- HD polyethylene UV stabilized (compliant with FDA & EEC)
- Capacity: 10/12 birds (depending on climate and weight)
- Top sliding door: 14.96" x 16.50" (38 x 42 cm)
- Size: 38" x 23" x 10.6"
- Weight: 18.19 lbs
- Load bearing: 2.20 lbs (1.000kg)
- Shipping capacity: 700 coops per 20 ft carton
- Load Capacity (internal): 77.25 lbs. (35 kg )  
14-16 birds, depending on climate and weight
- Weight: 14.50 lbs (6,55 kg)



### • Shipping capacity (unassembled):

	Std. 20' cont	40' HC cont.
9"	550	1100
11"	500	1000

# INDIV<sup>®</sup>

## FARM SUPPLY

Ph: 860-436-5980 / Email: [online@indiv.com](mailto:online@indiv.com)

[indivfarmsupply.com](http://indivfarmsupply.com)

